



SELECT Standard Vent Gas Models

All Select Models Feature:

- Long-lasting PEXAN cross-link polymer dip tube
- C3 technology flammable vapor ignition resistant design
- Easy-to-light Piezo igniter
- Durable brass drain valve with tamper resistant design
- Aluminum anode rod
- Factory installed temperature and pressure (T&P) relief valve
- 6-year tank and parts warranty



SELECT WATER HEATERS

| | Model Number | Peak Demand Output (gallon) | Energy Factor | Gallon Capacity | BTU Input Per Hour Natural | Recovery 90° F Rise Gallons Per Hour | Dimensions in Inches | | | Price | |
|--------------------|------------------------|-----------------------------|---------------|-----------------|----------------------------|--------------------------------------|----------------------|----------|-------------------|------------|--|
| | | | | | | | Height** | Diameter | Draft Hood Outlet | | |
| Select High Output | Standard Height Models | | | | | | | | | | |
| | GS6 40 YRRT | 88 | 0.60 | 38 | 50,000 | 48 | 58 1/2 | 20 1/2 | 4 | \$916.00 | |
| | GS6 50 YRRT | 90 | 0.58 | 48 | 50,000 | 51 | 60 7/8 | 20 | 4 | \$928.00 | |
| | GS6 50 YRRT 5 | 93 | 0.58 | 50 | 65,000 | 67 | 63 7/8 | 22 | 4 | \$960.00 | |
| | GS6 65 XRRT* | 112 | 0.55 | 65 | 65,000 | 67 | 63 1/4 | 22 | 4 | \$1,196.00 | |
| | GS6 100 XRRT* | N/A | N/A | 98 | 75,100 | 81 | 68 1/2 | 26 1/2 | 4 | \$2,692.00 | |
| | Short Model | | | | | | | | | | |
| GS6 75 XRRT* | N/A | N/A | 74 | 75,100 | 81 | 61 | 26 1/2 | 4 | \$1,202.00 | | |
| Select | Standard Height Models | | | | | | | | | | |
| | GS6 30 YBRT | 66 | 0.62 | 28 | 40,000 | 41 | 59 5/8 | 16 | 3 or 4 | \$706.00 | |
| | GS6 40 YBRT | 71 | 0.6 | 38 | 40,000 | 39 | 57 5/8 | 18 1/2 | 3 or 4 | \$664.00 | |
| | GS6 50 YBRT | 91 | 0.58 | 50 | 40,000 | 41 | 60 7/8 | 20 | 3 or 4 | \$760.00 | |
| | Short Models | | | | | | | | | | |
| | GS6 30 YBRS | 66 | 0.61 | 30 | 40,000 | 40 | 48 1/8 | 18 1/2 | 3 or 4 | \$706.00 | |
| | GS6 40 YBRS | 71 | 0.59 | 40 | 40,000 | 41 | 51 5/8 | 20 | 3 or 4 | \$664.00 | |
| GS6 50 YBRS | 86 | 0.58 | 50 | 40,000 | 41 | 53 1/4 | 24 | 3 or 4 | \$982.00 | | |

* Not equipped with C3 Technology

** Height shown is to top of draft hood





SELECT

Power Vent Gas Models (Single Pipe)

Features:

- Permits combined horizontal and vertical vent runs up to 115 feet with one elbow using 3" Schedule 40 PVC
- Quiet modular blower with 110/120 volt electrical system (rating 3 amps or less), 7-foot cord, standard 3-prong male connector
- Long-lasting PEXAN cross-link polymer dip tube
- Advanced intelli-vent gas control
- Aluminum anode rod
- Factory-installed temperature and pressure (T&P) relief valve
- HSI electric ignition
- 6-year tank and parts warranty



SELECT POWER VENT WATER HEATERS

| Model Number | Peak Demand Output (gallon) | Energy Factor | Gallon Capacity | BTU Input Per Hour Natural | Recovery 90° F Rise Gallons Per Hour | Dimensions in Inches | | | Price |
|--------------|-----------------------------|---------------|-----------------|----------------------------|--------------------------------------|----------------------|----------|---------------|------------|
| | | | | | | Height* | Diameter | Vent Outlet** | |
| PR6 40 XCVIT | 76 | 0.61 | 40 | 40,000 | 42 | 63 1/2 | 18 1/4 | 2 or 3 | \$1,072.00 |
| PR6 50 XCVIT | 84 | 0.61 | 50 | 40,000 | 42 | 65 | 20 1/4 | 2 or 3 | \$1,200.00 |
| PR6 50 XRVIT | 91 | 0.59 | 50 | 52,500 | 54 | 68 1/2 | 20 | 3 or 4 | \$1,574.00 |
| PR6 75 XRVIT | 128 | 0.53 | 75 | 75,000 | 77 | 72 1/4 | 26 1/4 | 3 or 4 | \$1,930.00 |

* Height shown is to top of blower outlet

** All connections 3", increasers or reducers included



SELECT

Power Direct-Vent Gas Models (Two Pipe)

Features:

- Two-pipe "closed combustion" system permits combined horizontal and vertical venting and air intake runs up to 45 total feet with one elbow using 3" Schedule 40 PVC
- Quiet modular blower with 110/120 volt electrical system (rating 3 amp or less), 7-foot cord, standard 3-prong male connector
- Long-lasting PEXAN cross-link polymer dip tube
- Advanced intelli-vent gas control with HSI
- Aluminum anode rod
- Factory-installed temperature and pressure (T&P) relief valve
- 6-year tank and parts warranty



SELECT POWER DIRECT VENT WATER HEATERS

| Model Number | Peak Demand Output (gallon) | Energy Factor | Gallon Capacity | BTU Input Per Hour Natural | Recovery 90° F Rise Gallons Per Hour | Dimensions in Inches | | | Price |
|--------------|-----------------------------|---------------|-----------------|----------------------------|--------------------------------------|----------------------|----------|-------------|----------------|
| | | | | | | Height* | Diameter | Vent Outlet | |
| PR6 40 XBPDT | 73 | 0.59 | 40 | 40,000 | 41 | 57 | 21 | 3 | \$1,558.00 |
| PR6 50 XBPDT | 80 | 0.58 | 50 | 40,000 | 41 | 66 | 21 | 3 | \$1,686.00 |
| PR6 75 XRPDT | 123 | 0.53 | 75 | 70,000 | 72 | 71 1/2 | 26 1/4 | 3 | Call for Price |

*Height shown is to top of air intake and blower outlet.





SELECT

Residential Electric Water Heaters



Features:

- Tall, short and Lowboy models available
- Longer-lasting low-watt density copper lower heating element – upper heating element is high-watt density copper element
- Diffuser dip tube – made of State PEXAN, a cross-link PEX polymer that can withstand long term exposure to water temperatures up to 400° F
- Aluminum anode rod
- Glass-lined tank
- Factory installed side-mounted temperature and pressure (T&P) relief valve
- 6-year tank and parts warranty

SELECT ELECTRIC WATER HEATERS

| Model Number | Peak Demand Output (gallon) | Energy Factor | Gallon Capacity | Standard Element Wattage 240 V.A.C. Upper/Lower | Recovery 90° F Rise Gallons Per Hour | Dimensions in Inches | | Price |
|------------------|-----------------------------|---------------|-----------------|--|---|----------------------|----------|----------------|
| | | | | | | Height | Diameter | |
| Tall Models | | | | | | | | |
| ES6 30 DORT | 43 | 0.93 | 30 | 4500/4500 | 21 | 46 ½ | 18 | \$580.00 |
| ES6 40 DORT | 52 | 0.92 | 40 | 4500/4500 | 21 | 59 ½ | 18 | \$582.00 |
| ES6 52 DORT | 60 | 0.9 | 50 | 4500/4500 | 21 | 54 | 20 ½ | \$600.00 |
| ES6 55 DORT | 64 | 0.9 | 55 | 4500/4500 | 21 | 60 ¼ | 20 ½ | Call for Price |
| ES6 66 DORT | 72 | 0.88 | 66 | 4500/4500 | 21 | 60 ¼ | 22 | Call for Price |
| ES6 80 DORT | 81 | 0.86 | 80 | 4500/4500 | 21 | 60 ½ | 24 | \$1,106.00 |
| ES6 120 DORT | 116 | 0.81 | 119 | 4500/4500 | 21 | 64 ¼ | 28 | Call for Price |
| Short Models | | | | | | | | |
| ES6 30 DORS | 43 | 0.93 | 30 | 4500/4500 | 21 | 36 ½ | 20 ½ | Call for Price |
| ES6 40 DORS | 52 | 0.92 | 40 | 4500/4500 | 21 | 44 | 20 ½ | Call for Price |
| ES6 50 DORS | 62 | 0.9 | 50 | 4500/4500 | 21 | 48 | 22 | Call for Price |
| Lowboy Models | | | | | | | | |
| ES6 30 DOLS | 41 | 0.93 | 29 | 4500/4500 | 21 | 30 | 22 | Call for Price |
| ES6 40 DOLS | 48 | 0.92 | 40 | 4500/4500 | 21 | 32 ¼ | 25 | \$598.00 |
| ES6 50 DOLS | 55 | 0.9 | 50 | 4500/4500 | 21 | 34 | 26 ½ | Call for Price |
| Table-Top Models | | | | | | | | |
| P6 30 20T1* | 45 | 0.89 | 27 | 4500/4500 | 21 | 36 | 21 | Call for Price |
| P6 40 20T4 W* | 52 | 0.88 | 40 | 4500/4500 | 21 | 36 | 24 | Call for Price |

* Depth (front to back) of both Table Top models is 25-1/8"



SELECT

Specialty Residential Electric Water Heaters

Features:

- 6-year tank and parts warranty
- Compact design
- Side-mounted plumbing
- 6 through 40 gallon capacity
- Single element standard



SELECT JUNIOR WATER HEATERS

| Model Number | Gallon Capacity | Standard Element Wattage | | Recovery 90° F Rise Gallons Per Hour | Dimensions in Inches | | Price |
|---------------|-----------------|--------------------------|--|---|----------------------|----------|----------------|
| | | 120V | | | Height | Diameter | |
| P6 6 10MS K | 6 | 1650 | | 8 | 17 1/4 | 14 | \$540.00 |
| P6 10 10MS K | 10 | 1650 | | 8 | 17 1/4 | 16 | \$570.00 |
| P6 17 10MS K | 17 | 1650 | | 8 | 28 | 18 | Call for Price |
| P6 20 10MS K | 19.9 | 1650 | | 8 | 21 3/4 | 20 | \$650.00 |
| ES6 30 SOMS K | 29 | 1650 | | 8 | 30 | 22 | \$770.00 |
| ES6 40 SOMS K | 40 | 1650 | | 8 | 32 1/4 | 25 | Call for Price |



SANDBLASTER FORCE

SDV SERIES – Power Direct-Vent Gas (Two Pipe)



Features:

- Power direct-vent design draws all combustion make-up air from outside, eliminates negative air pressure problems
- Self-cleaning feature – new Hydro Cannon
- Installs with 3", 4" or 6" Schedule 40 PVC pipe
- Intermittent electronic ignition on SDV models
- ASME tank construction available on selected models
- Multiple anode rods
- 83% thermal efficiency – meets ASHRAE/IESNA 90.1-1999
- 3-year limited tank warranty

**CALL FOR
PRICING**

SANDBLASTER FORCE WATER HEATERS

| Model Number | Gal Cap | BTU Input Per Hour Natural | First-Hour Delivery Gallons @ 100° Rise | Recovery - GPH @ Degree Rise | | Dimensions in Inches | | Approx Shipping Wt. (lbs) | Water Conn | Water Conn (Female N.P.T.) |
|-----------------------------|---------|----------------------------|---|------------------------------|-----------|--------------------------------|--------------------------------|---------------------------|-------------------------------|-------------------------------|
| | | | | 80° Rise | 100° Rise | Height** | Diameter | | | |
| SDV75 70NE | 75 | 70,000 | 117 | 81 | 64 | 69 ⁵ / ₈ | 26 | 352 | ³ / ₄ | ³ / ₄ |
| SDV80 140NET | 80 | 140,000 | 200 | 180 | 144 | 76 ¹ / ₄ | 28 | 680 | 1 ¹ / ₂ | 1 ¹ / ₂ |
| SDV100 199NES* ¹ | 100 | 199,000 | 276 | 258 | 206 | 74 ⁷ / ₈ | 30 ¹ / ₄ | 825 | 1 ¹ / ₂ | 1 ¹ / ₂ |
| SDV100 260NE* | 100 | 260,000 | 338 | 335 | 268 | 79 ¹ / ₂ | 30 ¹ / ₄ | 900 | 1 ¹ / ₂ | 1 ¹ / ₂ |
| SDV100 400NE* | 95 | 400,000 | 461 | 493 | 295 | 82 ¹ / ₄ | 30 ¹ / ₄ | 950 | 1 ¹ / ₂ | 1 ¹ / ₂ |

* Available with ASME tank construction.

** Height shown is to top of blower outlet

¹ Rear plumbing connections ¹



SANDBLASTER

SBS SERIES – Light Duty

SBD SERIES – Automatic Flue Damper Gas

Features:

- Self Cleaning feature – new Hydro Cannon design
- Energy-saving automatic flue damper
- Front, top or rear water connection options – self-cleaning Hydro Cannon functions only when front cold water connection is used
- Intermittent electronic ignition
- ASME tank construction available on 250,000 through 500,000 BTU models
- Multiple anode rods with stainless steel cores for longer life
- 80% thermal efficiency
- 3-year limited tank warranty



STATE SBD WATER CONNECTIONS

| Model Number | Water Connections in Inches | | | | | |
|----------------|-----------------------------|-------|-------|--------|-------|-------|
| | Inlet | | | Outlet | | |
| | Top | Front | Rear | Top | Front | Rear |
| SBD71 120NE | 1 1/2 | 1 1/2 | 1 1/2 | 1 1/2 | 1 1/2 | 1 1/2 |
| SBD81 154NE | 1 1/2 | 1 1/2 | 1 1/2 | 1 1/2 | 1 1/2 | 1 1/2 |
| SBD81 180NE | 1 1/2 | 1 1/2 | 1 1/2 | 1 1/2 | 1 1/2 | 1 1/2 |
| SBD100 199NET | 1 1/2 | 1 1/2 | 1 1/2 | 1 1/2 | 1 1/2 | 1 1/2 |
| SBD100 199NE | 1 1/2 | 1 1/2 | 2 | 1 1/2 | 1 1/2 | 2 |
| SBD81 190NE | 1 1/2 | 1 1/2 | 1 1/2 | 1 1/2 | 1 1/2 | 1 1/2 |
| SBD100 199NES | 1 1/2 | 1 1/2 | 1 1/2 | 1 1/2 | 1 1/2 | 1 1/2 |
| SBD100 250NE A | 1 1/2 | 1 1/2 | 1 1/2 | 1 1/2 | 1 1/2 | 1 1/2 |
| SBD65 251NE A | NA | 1 1/2 | 1 1/2 | NA | 1 1/2 | 1 1/2 |
| SBD100 275NE A | 1 1/2 | 1 1/2 | 1 1/2 | 1 1/2 | 1 1/2 | 1 1/2 |
| SBD65 305NE A | NA | 1 1/2 | 1 1/2 | NA | 1 1/2 | 1 1/2 |
| SBD85 365NE A | 1 1/2 | 1 1/2 | 1 1/2 | 1 1/2 | 1 1/2 | 1 1/2 |
| SBD100 399NE A | 1 1/2 | 1 1/2 | 1 1/2 | 1 1/2 | 1 1/2 | 1 1/2 |
| SBD85 500NE A | 1 1/2 | 1 1/2 | 1 1/2 | 1 1/2 | 1 1/2 | 1 1/2 |

| Model Number | Price |
|----------------|-------------|
| SBD71 120NE | \$4,932.00 |
| SBD81 154NE | \$5,896.00 |
| SBD81 180NE | \$7,166.00 |
| SBD100 199NET | \$6,946.00 |
| SBD100 199NES | \$6,946.00 |
| SBD81 190NE | \$6,946.00 |
| SBD100 199NES | \$6,946.00 |
| SBD100 250NE A | \$8,610.00 |
| SBD65 251NE A | \$8,056.00 |
| SBD100 275NE A | \$8,620.00 |
| SBD65 305NE A | \$8,800.00 |
| SBD85 365NE A | \$10,876.00 |
| SBD100 399NE A | \$10,748.00 |
| SBD85 500NE A | \$12,604.00 |
| SBS65 65 NE | \$2,110.00 |
| SBS75 76NE | \$2,242.00 |
| SBS100 75NE | \$2,840.00 |

No caps or plugs supplied
 Front and rear connections are female N.P.T.
 Top connection is male N.P.T.

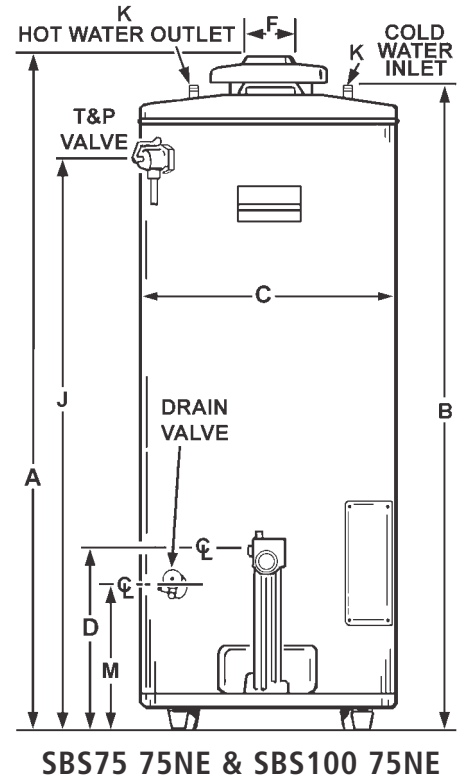
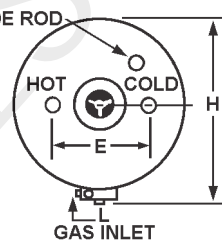
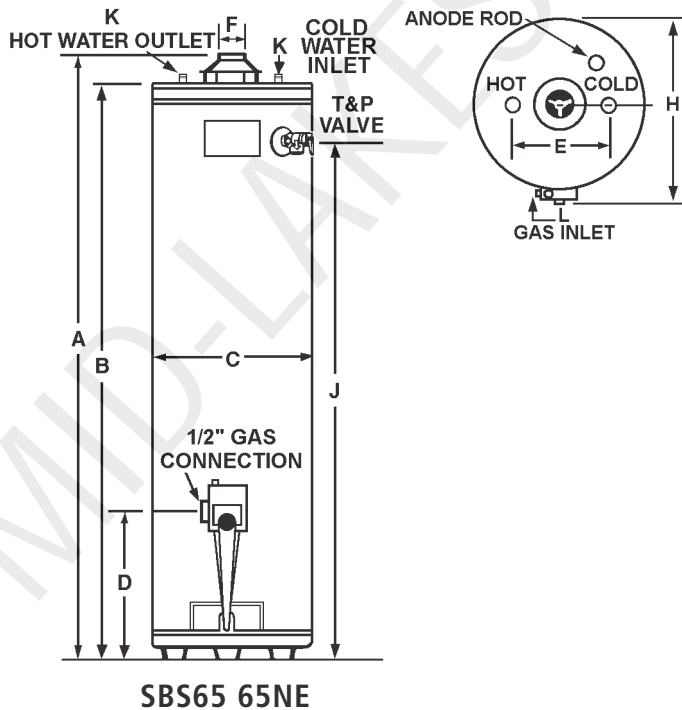
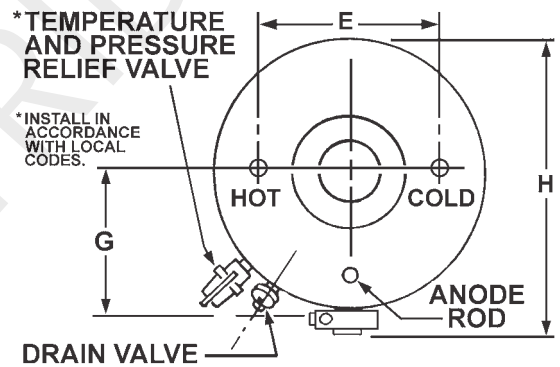
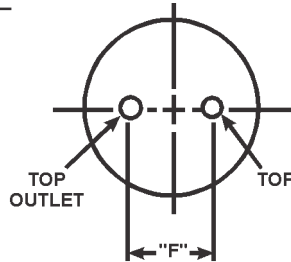
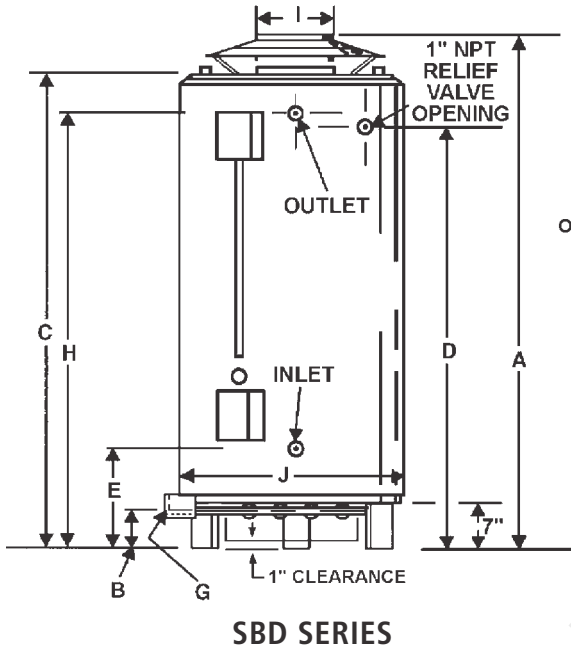




SANDBLASTER

SBS SERIES – Light Duty

SBD SERIES – Automatic Flue Damper Gas





SANDBLASTER
SBS SERIES – Light Duty
SBD SERIES – Automatic Flue Damper Gas

SBD AND SBS COMMERCIAL GAS WATER HEATER

| Model Number | Gallon Cap | Input Rate BTUH | First Hour Delivery Gallons 100° F Rise | Recovery @ 100° F | Dimensions in Inches | | | | | | | | | | Approx Shipping Weight (lbs.) | Approx ASME Weight (lbs.) |
|----------------|------------|--|---|-------------------|----------------------|--------|--------|---------|--------|----|--------|----------|--------|--------|-------------------------------|------------------------------|
| | | | | | A | B | C | D | E | F | G | H | I | J | | |
| SBD | | | | | | | | | | | | | | | | |
| SBD71 120NE | 71 | 120,000 | 166 | 116 | 69 3/4 | 4 1/4 | 59 1/2 | 50 7/8 | 19 2/3 | 19 | 1/2 | 51 7/8 | 5 | 27 3/4 | 400 | |
| SBD81 154NE | 81 | 154,000 | 206 | 149 | 73 | 4 1/4 | 66 1/2 | 57 7/8 | 19 2/3 | 19 | 1/2 | 59 | 6 | 27 3/4 | 470 | |
| SBD81 180NE | 81 | 180,000 | 231 | 174 | 67 1/2 | 4 1/2 | 62 | 53 5/8 | 20 1/2 | 21 | 1/2 | 54 5/8 | 6 | 27 3/4 | 470 | |
| SBD100 199NET | 100 | 199,000 | 263 | 193 | 75 | 4 1/2 | 70 | 61 5/8 | 20 1/2 | 21 | 1/2 | 62 5/8 | 6 | 27 3/4 | 603 | |
| SBD81 190NE | 81 | 190,000 | 241 | 184 | 67 1/2 | 4 1/2 | 62 | 53 5/8 | 20 1/2 | 21 | 1/2 | 54 5/8 | 6 | 27 3/4 | 470 | |
| SBD100 199NES | 100 | 199,000 | 263 | 193 | 72 | 4 1/2 | 65 1/8 | 55 7/8 | 19 3/4 | 23 | 1/2 | 56 3/8 | 6 | 30 1/4 | 630 | |
| SBD100 250NE A | 100 | 250,000 | 312 | 242 | 72 | 4 1/2 | 65 1/8 | 55 7/8 | 19 3/4 | 23 | 1/2 | 56 3/8 | 8 | 30 1/4 | | 725 |
| SBD65 251NE A | 65 | 251,000 | 289 | 243 | 75 | 4 1/2 | 65 3/4 | 57 1/4 | 20 | NA | 1/2 | 58 3/4 | 8 | 27 3/4 | | 862 |
| SBD100 275NE A | 100 | 275,000 | 337 | 267 | 72 | 4 1/2 | 63 1/8 | 55 7/8 | 19 3/4 | 23 | 1/2 | 56 3/8 | 8 | 30 3/4 | | 725 |
| SBD65 305NE A | 65 | 305,000 | 342 | 296 | 75 | 4 1/2 | 65 3/4 | 57 1/4 | 20 | NA | 1/2 | 58 3/4 | 8 | 27 3/4 | | 862 |
| SBD85 365NE A | 85 | 365,000 | 414 | 354 | 79 1/2 | 4 1/2 | 70 1/4 | 62 1/2 | 22 1/2 | 23 | 3/4 | 63 | 8 | 27 3/4 | | 833 |
| SBD100 399NE A | 100 | 399,000 | 458 | 388 | 75 1/2 | 4 1/2 | 67 1/2 | 58 1/4 | 26 3/4 | 23 | 3/4 | 59 | 8 | 30 1/4 | | 874 |
| SBD85 500NE A | 85 | 500,000 | 545 | 485 | 82 1/4 | 4 1/2 | 73 1/2 | 65 1/4 | 25 1/2 | 21 | 1 | 65 3/4 | 8 | 27 3/4 | | 857 |
| SBS | | | | | | | | | | | | | | | | |
| Model Number | Gallon Cap | BTU'S Per Hour Natural or Propane (LP) | First Hour Delivery Gallons 100° Rise | Recovery @ 100° F | A | B | C | D | E | F | G | H | J | K | Gas Conn | Approx Shipping Weight (lbs) |
| SBS65 65NE | 65 | 65,000 | 106 | 60 | 63 1/4 | 59 1/2 | 22 | 15 | 8 | 4 | | 26 | 53 3/4 | 3/4 | 1/2" | 215 |
| SBS75 75NE | 74 | 76,000 | 124 | 72 | 61 1/8 | 58 1/2 | 25 3/8 | 15 3/16 | 16 | 4 | 14 | 28 1/2 | 50 5/8 | 1 | 1/2" | 271 |
| SBS100 75NE | 98 | 78,000 | 143 | 74 | 69 3/4 | 66 1/2 | 26 1/2 | 15 3/16 | 16 | 4 | 14 1/2 | 29 11/16 | 57 3/8 | 1 1/4 | 1/2" | 350 |

Propane Models Available





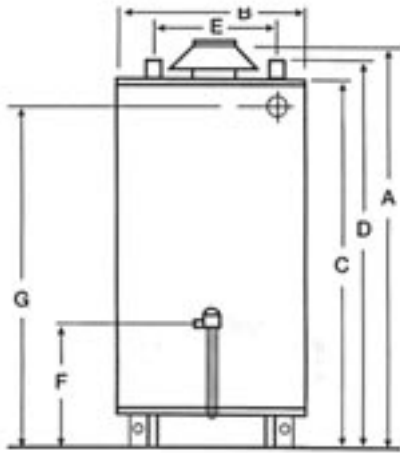
GAS FIRED



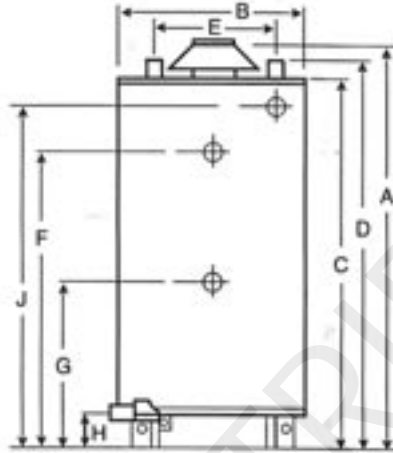
Features:

- DURA-GLAS enameled heavy duty single and multi flue steel tanks
- Foam insulated
- Dual or four anode rods to ensure maximum tank life.
- Self-cleaning turbulence inducing cold water inlet-tube engineered to diminish hard water area sediment deposits
- Full size hand-hole cleanout for eased tank inspection and/or removal of sediment deposits
- Electronic direct-spark ignition system saves fuel by eliminating the need for a standby gas pilot
- Automatic motorized flue damper reduces tank heat loss during standby periods for lowest operating costs
- Factory installed energy cut-off system and pressure/temperature relief valve
- All models are design-certified by CSA International and meet or exceed the efficiency requirements of the D.O.E. Energy Policy Act (Epack), ASHRAE 90.1-1999 and the energy mandate of the State of California.

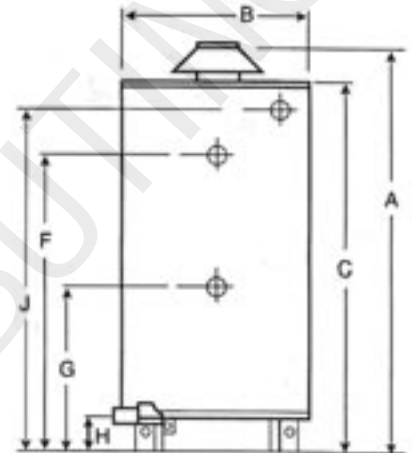
| Model Number | Price |
|--|-------------|
| Light Duty Storage Series | |
| 75-76-AS | \$2,178.00 |
| 100-83-AS | \$2,722.00 |
| Heavy Duty Spark Ignition/Flue Dampered Series | |
| D-80-125 | \$4,786.00 |
| D-80-165-AS | \$5,142.00 |
| D-80-180-AS | \$5,314.00 |
| D-80-199-AS | \$5,430.00 |
| D-100-199-AS | \$5,430.00 |
| D-100T-199-AS | \$5,432.00 |
| ASME Code Spark Ignition/Flue Dampered Series | |
| D-100-250-ASME | \$7,870.00 |
| D-100-270-ASME | \$7,870.00 |
| D-100-300-ASME | \$8,072.00 |
| D-75-365-ASME | \$9,200.00 |
| D-75-399-ASME | \$10,586.00 |
| D-80-512-ASME | \$11,920.00 |



MODELS: 75-76; 100-83



MODELS: D-80-125; D-80-165;
D-80-180; D-80-199; D-100-199;
D-100T-199; D-100-250;
D-100-270; D-100-300



MODELS: D-75-365; D-75-399;
D-80-512

COMMERCIAL GAS WATER HEATERS

| Model Number | Gal Cap | BTU Input | Rec @ 100° F Rise | Connections in Inches† | | | | Dimensions shown in inches (see drawings) | | | | | | | | | Approx. Shipping Weight |
|--|---------|-----------|-------------------|------------------------|------------|-----|-----|---|--------|--------|--------|--------|--------|--------|-------|--------|-------------------------|
| | | | | Vent | Top* Water | Gas | T&P | A | B | C | D | E | F | G | H | J | |
| Light Duty Storage Series | | | | | | | | | | | | | | | | | |
| 75-76-AS | 75 | 76,100 | 74 | 4 | 1 1/2 | 1/2 | 3/4 | 66 3/4 | 26 1/4 | 64 1/2 | 66 3/4 | 16 | 18 | 56 1/2 | | | 294 |
| 100-83-AS | 100 | 83,000 | 81 | 4 | 1 1/2 | 1/2 | 3/4 | 70 3/4 | 28 | 68 1/8 | 71 5/8 | 16 | 18 | 59 1/2 | | | 420 |
| Heavy Duty Spark Ignition/Flue Dampered Series | | | | | | | | | | | | | | | | | |
| D-80-125 | 80 | 125,000 | 121 | 5 | 1 1/2 | 1/2 | 3/4 | 73 1/4 | 26 1/4 | 67 1/2 | 70 | 19 5/8 | 55 1/4 | 22 3/4 | 4 3/4 | 57 1/8 | 519 |
| D-80-165-AS | 80 | 165,000 | 168 | 6 | 1 1/2 | 1/2 | 3/4 | 75 1/4 | 26 1/4 | 67 1/2 | 70 | 19 5/8 | 55 1/4 | 22 3/4 | 4 3/4 | 57 1/8 | 539 |
| D-80-180-AS | 80 | 180,000 | 177 | 6 | 1 1/2 | 1/2 | 3/4 | 75 1/4 | 26 1/4 | 67 1/2 | 70 | 19 5/8 | 55 1/4 | 22 3/4 | 4 3/4 | 57 1/8 | 539 |
| D-80-199-AS | 80 | 199,900 | 194 | 6 | 1 1/2 | 1/2 | 3/4 | 68 1/4 | 28 1/4 | 60 1/2 | 63 5/8 | 21 1/4 | 52 | 18 3/4 | 4 3/4 | 53 5/8 | 539 |
| D-100-199-AS | 100 | 199,900 | 194 | 6 | 1 1/2 | 1/2 | 3/4 | 73 5/8 | 30 1/4 | 65 5/8 | 67 5/8 | 23 5/8 | 57 1/2 | 20 | 4 3/4 | 58 7/8 | 682 |
| D-100T-199-AS | 100 | 199,900 | 194 | 6 | 1 1/2 | 1/2 | 3/4 | 78 1/4 | 28 1/4 | 70 1/2 | 73 5/8 | 21 1/4 | 62 | 18 3/4 | 4 3/4 | 63 5/8 | 566 |
| ASME Code Spark Ignition/Flue Dampered Series | | | | | | | | | | | | | | | | | |
| D-100-250-ASME | 100 | 250,000 | 242 | 6 | 1 1/2 | 1/2 | 1 | 73 5/8 | 30 1/4 | 65 5/8 | 67 5/8 | 23 5/8 | 57 1/2 | 20 | 4 3/4 | 58 7/8 | 787 |
| D-100-270-ASME | 100 | 270,000 | 255 | 6 | 1 1/2 | 1/2 | 1 | 73 5/8 | 30 1/4 | 65 5/8 | 67 5/8 | 23 5/8 | 57 1/2 | 20 | 4 3/4 | 58 7/8 | 787 |
| D-100-300-ASME | 100 | 300,000 | 291 | 7 | 1 1/2 | 1/2 | 1 | 73 5/8 | 30 1/4 | 65 5/8 | 67 5/8 | 23 5/8 | 57 1/2 | 20 | 4 3/4 | 58 7/8 | 787 |
| D-75-365-ASME | 75 | 365,000 | 358 | 8 | N/A | 1 | 1 | 75 3/4 | 30 1/4 | 66 1/4 | N/A | N/A | 57 | 19 1/4 | 4 3/4 | 58 1/4 | 903 |
| D-75-399-ASME | 75 | 399,900 | 393 | 8 | N/A | 1 | 1 | 75 3/4 | 30 1/4 | 66 1/4 | N/A | N/A | 57 | 19 1/4 | 4 3/4 | 58 1/4 | 903 |
| D-80-512-ASME | 80 | 512,000 | 496 | 10 | N/A | 1 | 1 | 72 1/4 | 30 1/4 | 66 1/4 | N/A | N/A | 57 | 19 1/4 | 4 3/4 | 58 1/4 | 908 |

*Caps or plugs not included
†Rear and Front Water Connection 2"





MIGHTY THERM

Copper Finned Gas-Fired Volume Water Heaters



Features:

- Energy efficient as high as 82%
- Integral finned, copper tube heat exchanger with 160 PSI working pressure
- Field removable external header covers
- ASME pressure relief valve
- Stainless steel atmospheric burners
- Flow switch
- EM2 pump delay circuit
- Controls meet A.G.A. and C.G.A.

Models Available:

- Model VW- Volume Water Heater (no pump)
- Model PW – Volume Water Heater with Pump

Available Firing Modes:

- On/Off: Standard on all sizes
- Two Stage: Available on all sizes
- Four Stage: Available on sizes 500-5000
- Motorized Modulation: Available on sizes 500-5000

CALL FOR
PRICING

LAARS MIGHTY THERM WATER HEATER

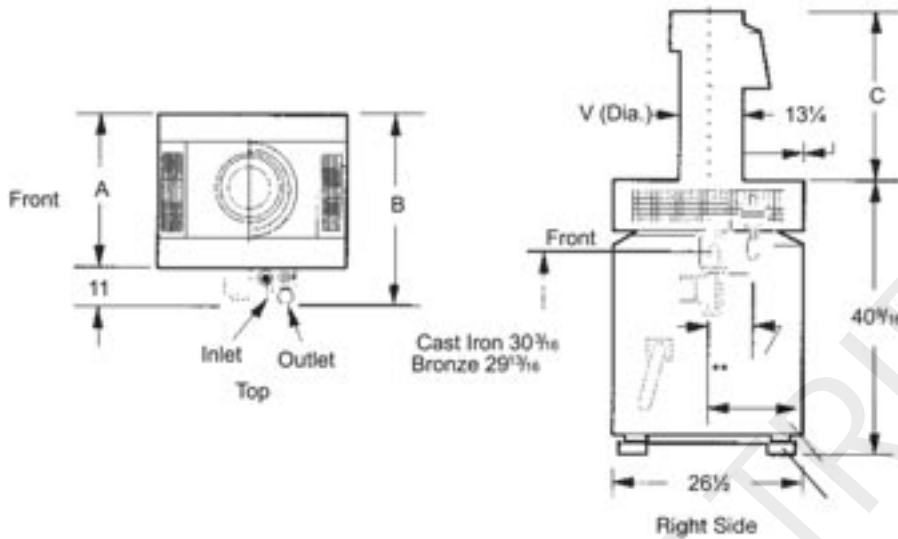
| Indoor Models | | | | | | | | | | | |
|-------------------|--------------|---------------|---------------------|--|-----------------------------|----------------------|---------|--------|----|-------------------------|-----------------------|
| Indoor Model Size | Input MBTU/h | Output MBTU/h | Gas Connection NPT* | | Water Conn. Size inches NPT | Dimensions in inches | | | | Shipping Weight in lbs. | Recovery @ 100° F gph |
| | | | Natural | | | A | B | C | V | | |
| 175 | 175 | 144 | 1/2-3/4 | | 1 1/2 | 18 | 26 1/2 | 23 1/2 | 6 | 255 | 170 |
| 250 | 250 | 205 | 3/4 | | 1 1/2 | 22 1/2 | 31 | 24 3/4 | 7 | 255 | 245 |
| 325 | 325 | 267 | 3/4 | | 1 1/2 | 26 3/4 | 35 3/4 | 25 7/8 | 8 | 325 | 316 |
| 400 | 400 | 328 | 3/4 | | 1 1/2 | 31 3/4 | 40 1/4 | 26 7/8 | 9 | 360 | 389 |
| 500 | 500 | 410 | 1 | | 2 | 33 5/8 | 39 5/8 | 23 5/8 | 10 | 612 | 486 |
| 600 | 600 | 492 | 1 | | 2 | 38 5/8 | 44 5/8 | 22 5/8 | 12 | 702 | 583 |
| 715 | 715 | 586 | 1 | | 2 | 44 1/4 | 50 1/4 | 22 5/8 | 12 | 750 | 695 |
| 850 | 850 | 697 | 1-1 1/4 | | 2 | 50 5/8 | 56 5/8 | 21 5/8 | 14 | 830 | 826 |
| 1010 | 1010 | 828 | 1 1/4 | | 2 1/2 | 58 | 64 | 20 5/8 | 16 | 986 | 982 |
| 1200 | 1200 | 984 | 1 1/4 | | 2 1/2 | 66 1/4 | 72 1/4 | 20 5/8 | 16 | 995 | 1166 |
| 1430 | 1430 | 1173 | 1 1/4 | | 2 1/2 | 76 | 82 | 19 5/8 | 18 | 1080 | 1390 |
| 1670 | 1670 | 1369 | 1 1/4-1 1/2 | | 2 1/2 | 85 3/8 | 91 3/8 | 19 5/8 | 18 | 1175 | 1623 |
| 1825 | 1825 | 1497 | 1 1/4-1 1/2 | | 2 1/2 | 92 1/4 | 98 1/4 | 19 5/8 | 18 | 1270 | 1774 |
| 2000 | 2000 | 1640 | 1 1/2 | | 4 | 55 1/2 | 63 | 24 1/4 | 22 | 1815 | 1968 |
| 2450 | 2450 | 2009 | 1 1/2-2 | | 4 | 65 1/2 | 73 | 24 1/2 | 24 | 1950 | 2411 |
| 3050 | 3050 | 2501 | 1 1/2 - 2 | | 4 | 78 | 85 1/4 | 24 1/2 | 26 | 2100 | 3001 |
| 3500 | 3500 | 2870 | 2 | | 4 | 88 | 95 1/2 | 24 1/2 | 28 | 2237 | 3444 |
| 4050 | 4050 | 3321 | 2 - 2 1/2 | | 4 | 100 1/2 | 108 | 24 1/2 | 30 | 2555 | 3985 |
| 4500 | 4500 | 3690 | 2 1/2 | | 4 | 110 1/2 | 118 | 24 1/2 | 32 | 3075 | 4428 |
| 5000 | 5000 | 4100 | 2 1/2 | | 4 | 123 | 130 1/2 | 24 1/2 | 34 | 3050 | 4920 |

* When 2 gas connection sizes are shown, the smaller applies to the standard gas train, while the larger applies to optional trains. Consult factory for exact specifications.

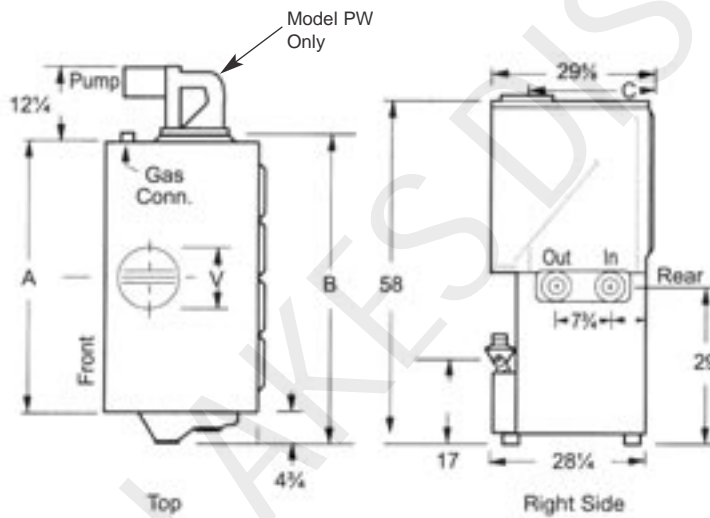


MIGHTY THERM

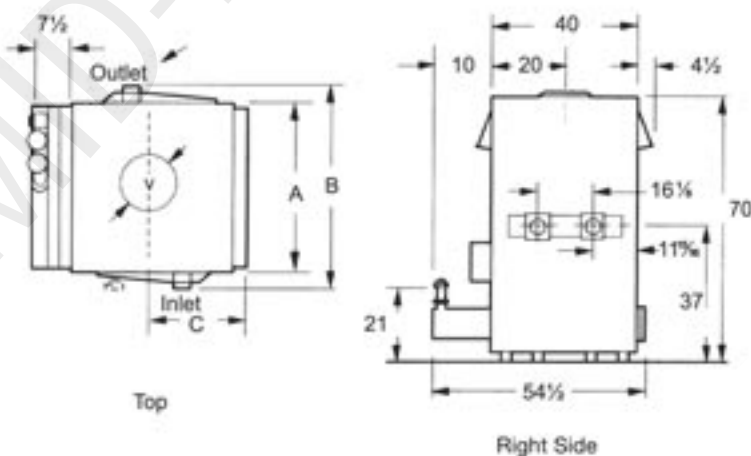
Copper Finned Gas-Fired Volume Water Heaters



SIZES 175-400



SIZES 500-1825



SIZES 2000-5000





PENNANT

Volume Water Heater

Features:

- Up to 85% efficiency
- Integral finned copper tube heat exchanger
- 160 PSI working pressure
- Fan-assisted combustion system with washable air filter
- Category III sidewall venting with optional vent kit
- ASME pressure relief valve
- Category 1 vertical venting
- Water flow switch
- Pump delay circuit
- Factory mounted pump



SIZING DATA

| Indoor Model | Input BTU/H x1000 | Output BTU/H x1000 | IBR Net Rating BTU/H x1000 | Firing Rate | Gas Conn. (inches) | Water Conn. (inches) | Shipping Weight (lbs.) |
|--------------|-------------------|--------------------|----------------------------|-------------|--------------------|----------------------|------------------------|
| 500 | 500 | 425 | 361 | 2-Stage | 1 1/4 | 2 | 425 |
| 750 | 750 | 638 | 542 | 2-Stage | 1 1/4 | 2 | 505 |
| 1000 | 999 | 849 | 722 | 3-Stage | 1 1/2 | 2 1/2 | 615 |
| 1250 | 1250 | 1063 | 903 | 4-Stage | 2 | 2 1/2 | 675 |
| 1500 | 1500 | 1275 | 1084 | 4-Stage | 2 | 2 1/2 | 760 |
| 1750 | 1750 | 1488 | 1264 | 4-Stage | 2 | 2 1/2 | 825 |
| 2000 | 1999 | 1699 | 1444 | 4-Stage | 2 | 2 1/2 | 955 |

DIMENSIONAL DATA

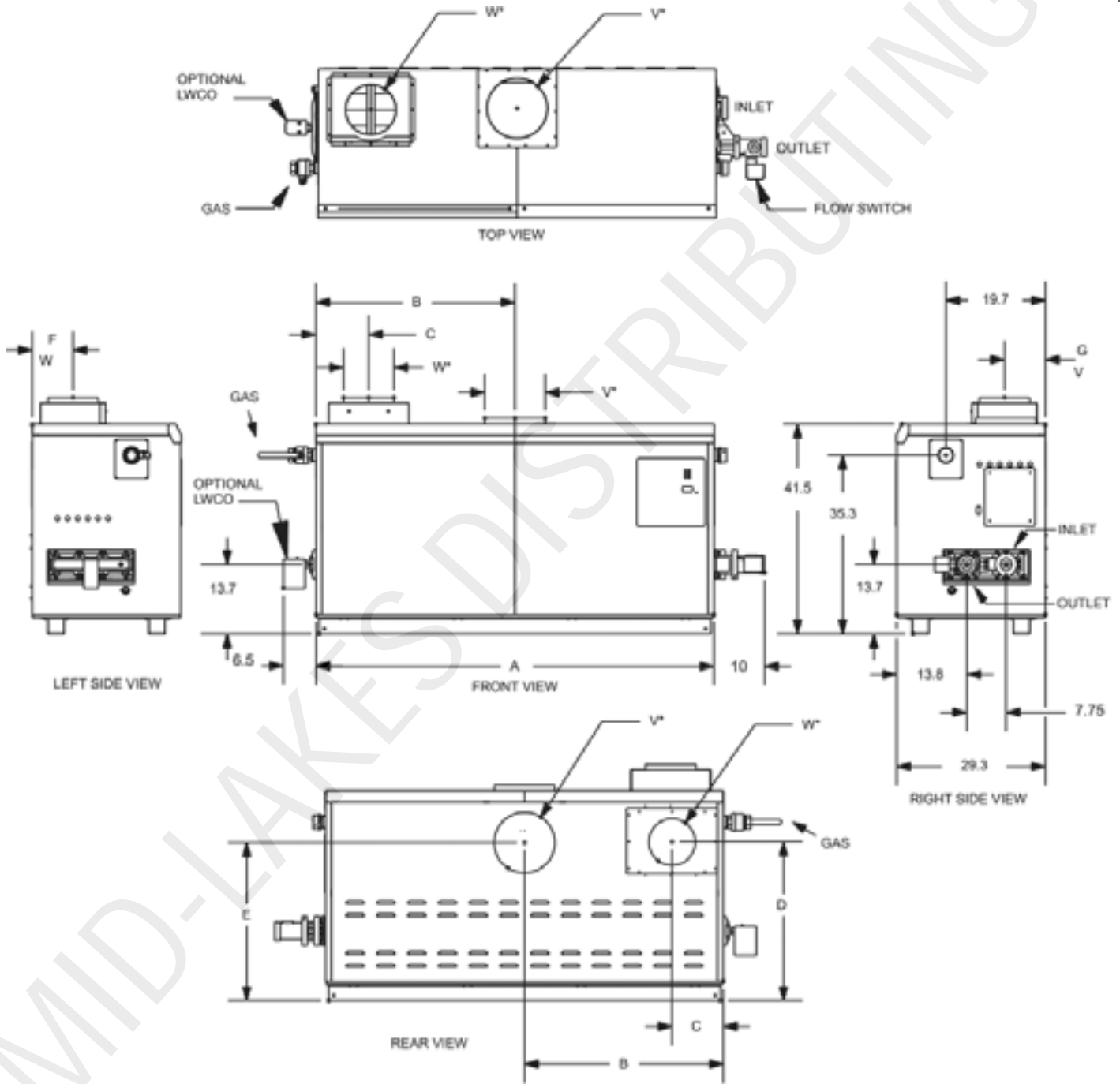
| Size | A | C | D | E | F | G | H | Air Conn. W* | Vent Conn. V* | Horiz. Vent |
|------|--------|--------|--------|--------|--------|-------|-------|--------------|---------------|-------------|
| 500 | 33 1/2 | 15 3/4 | 5 3/4 | 29 3/4 | 32 3/4 | 7 3/4 | 8 3/4 | 6 | 6 | 6 |
| 750 | 45 1/2 | 21 3/4 | 5 3/4 | 29 3/4 | 32 3/4 | 7 3/4 | 8 3/4 | 6 | 8 | 6 |
| 1000 | 57 1/2 | 28 3/4 | 5 3/4 | 29 3/4 | 32 3/4 | 7 3/4 | 7 | 8 | 10 | 8 |
| 1250 | 68 | 34 | 10 1/8 | 30 3/4 | 29 1/2 | 8 3/4 | 8 3/4 | 8 | 10 | 8 |
| 1500 | 78 1/2 | 39 3/4 | 10 1/8 | 30 3/4 | 29 1/2 | 8 3/4 | 8 3/4 | 10 | 12 | 10 |
| 1750 | 89 | 44 1/2 | 10 1/8 | 30 3/4 | 29 1/2 | 8 3/4 | 8 3/4 | 12 | 14 | 12 |
| 2000 | 99 1/2 | 49 3/4 | 10 1/8 | 30 3/4 | 29 1/2 | 8 3/4 | 8 3/4 | 12 | 14 | 12 |

* Air and vent connections may be on top or back of the Pennant and are field convertible.



PENNANT

Volume Water Heater



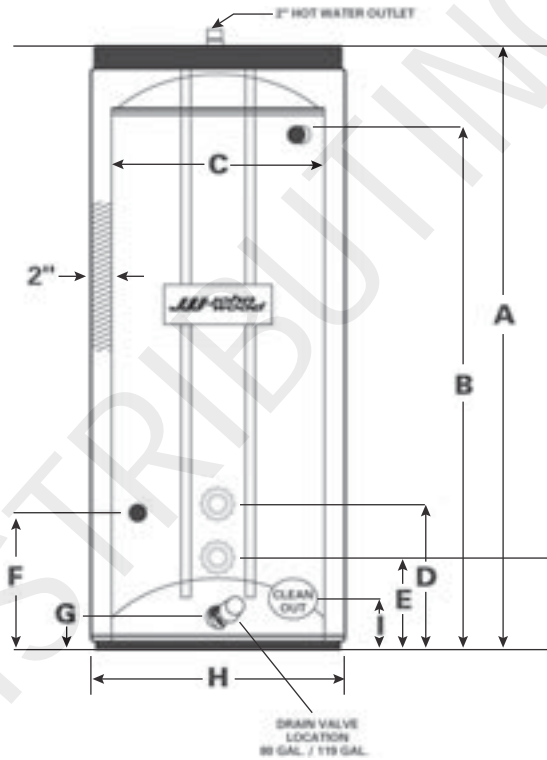


Commercial Hot Water Storage Tanks

Features:

- Patented TankSaver design. As glass within the tank wears, the stainless steel TankSaver virtually eliminates rust on the metal tank body.
- Glass-lined tanks
- Convenient hand-hole cleanout
- CFC-free foam insulation, R16.0
- Aquastat opening 3/4"
- Controls potable hot water storage up to 180°F
- High efficiency
- Jacketed models exceed ASHRAE/IES 90.1 – 1999 standards
- Side opening for T&P valve 1"
- Available in 80 and 119 gallon models, jacketed and insulated or bare and enamel painted

John Wood Limited Warranty: All John Wood storage tanks will be replaced free of charge in the case of tank leakage within five years from the date of installation on jacketed tanks.



JOHN WOOD COMMERCIAL HOT WATER STORAGE TANKS

| Capacity and Performance | Model | Gallons | Working Pressure | Shipping Weight (lbs.) |
|--------------------------|--------------|---------|------------------|------------------------|
| | S4120 | 119 | 150 psi | 342 |
| | S4080 | 80 | 150 psi | 195 |

| Dimensions | | A | B | C | D | E | F | G | H | I | J |
|--------------|--------------|-------------|-------------------------|------------------------|----------------------------|-------------------------------|--------------------------------|---------------------------|--------------------------|--------------------|---------------------|
| | Model | Unit Height | 1" T&P Opening (inches) | Tank Diameter (inches) | Top 2" Nipple MPT (inches) | Bottom 2" Nipple MPT (inches) | 3/4" Aquastat Opening (inches) | 3/4" Drain Valve (inches) | Casing Diameter (inches) | Hand Hole Cleanout | Insulation (inches) |
| | S4120 | 65 3/8 | 55 3/8 | 24 | 15 1/2 | 10 1/2 | 15 1/2 | 6 3/4 | 28 | 8 1/2 | 2 |
| S4080 | 60 1/4 | 52 1/4 | 20 | 14 | 9 | 14 | 5 | 24 | 7 | 2 | |

| Model Number | Price |
|--------------|------------|
| S4120 | \$1,428.00 |
| S4080 | \$832.00 |



Commercial Hot Water Storage Tanks

ST-80-AS / ST-120-AS

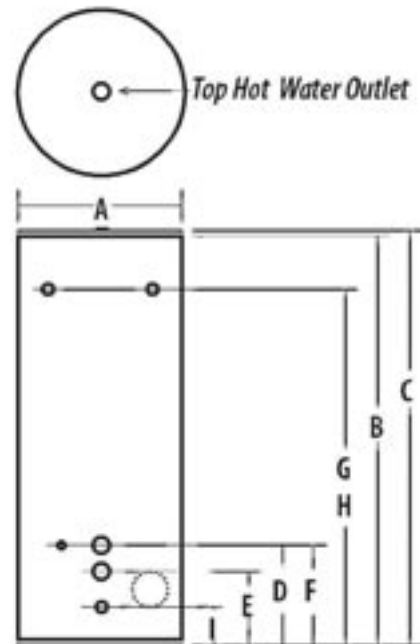
Features:

- Heavy gauge steel tank
- Inner tank glass lined with Dura-Glas – fired at 1600°F for optimum protection from the effects of corrosion
- Two full inches of non-CFC energy saving foam insulation
- Two anode rods to ensure longer tank life
- Easy removal of sediment and tank inspection – with a full-sized hand-hole clean-out
- Certified at 300 PSI test pressure and 150 PSI working pressure, and all tanks are 100% hydrostatically tested at the factory

American Standard Warranty: Five year limited warranty on inner glass-lined tank. One year limited warranty on all other component parts.



| COMMERCIAL STORAGE TANKS SPECIFICATIONS & DATA | | | | |
|--|------------------------------|-----------------------------------|------------------|--------|
| Dimensions (in inches) | | | | |
| Model | | ST-80-AS | ST-120-AS | |
| Capacity in Gal. | | 80 | 119 | |
| Exterior Dimensions | A | Jacket Diameter | 26 1/4 | 28 1/4 |
| | B | Height to Top of Tank | 56 1/8 | 67 7/8 |
| | C | Height to Top of Hot Water Outlet | 56 1/4 | 68 |
| | D | Height to Top of Circ. Conn | 16 1/4 | 16 1/4 |
| | E | Height to Bottom of Circ. Conn. | 11 1/4 | 11 1/4 |
| | F | Height to Aquastat Conn. | 16 1/4 | 16 1/4 |
| | G | Height to Thermometer Conn. | 48 9/16 | 60 |
| | H | Height to T&P Right Side Outlet | 48 9/16 | 60 |
| | I | Height to Drain Valve | 6 1/2 | 6 1/2 |
| Connections | Top Hot Water Connection | | 2 | 2 |
| | Circulation Line Connections | | 2 | 2 |
| | Aquastat & Thermometer | | 3/4 | 3/4 |
| | PTR Relief Valve | | 1 | 1 |
| Shipping Weight | | 240 | 420 | |
| Price | | Call for Pricing | \$1,428.00 | |





Standard Hot Water Storage Tanks



Features:

- State commercial storage tanks are ideal for increasing storage capacity when used along with water heaters and domestic hot water heating boilers.
- Meets or exceeds ASHRAE 90.1-1999
- Foam insulation – thick foam insulation reduces stand-by heat loss and saves energy
- Glass-lined tank – alkaline borosilicate composition is permanently fused to steel to provide corrosion protection and dependable use at water storage temperatures up to 180F.
- Heavy gauge steel jacket – with baked enamel finish
- Threaded openings – all tanks furnished with threaded openings for thermometer, relief valve, 2" recirculation lines, tankstat and drain valve
- Five year warranty on all models
- Anode rod –all 80 and 120 gallon models are equipped with an anode rod. Model PVG 02000 OVSA has two anode rods.

**CALL FOR
PRICING**

STATE STANDARD JACKETED STORAGE TANKS

| Model | Nominal Gallon Capacity | ASME | Standard Working Pressure | Approx Shipping Weight | Dimensions in Inches | | | | | | | Water Conn (female N.P.T.) | Stat Opening | Relief opening |
|---------------|-------------------------|------|---------------------------|------------------------|----------------------|--------------------------------|-------------------------------|-------------------------------|----|---|----|----------------------------|--------------|----------------|
| | | | | | A | B | C | D | E | F | G | | | |
| PVG 01200 OVT | 119 | No | 150 | 320 | 62 | 29 ³ / ₈ | 4 ¹ / ₈ | 6 ⁷ / ₈ | 54 | 2 | 42 | 2" | 3/4" | 1" |

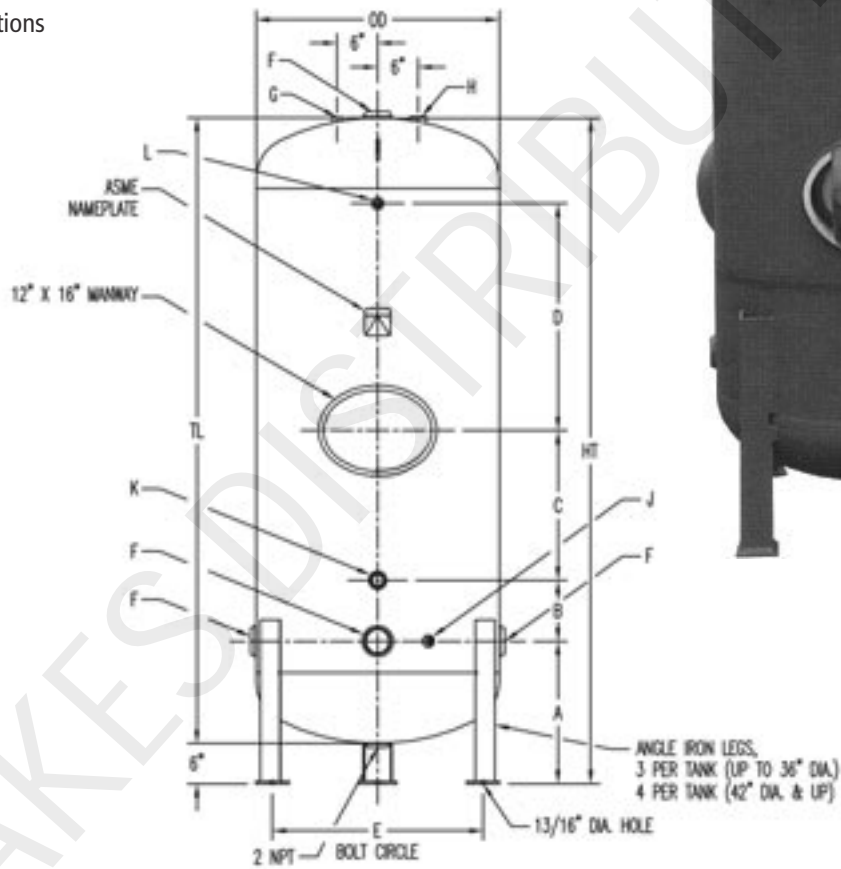


Commercial Hot Water Storage Tanks

CALL FOR PRICING

Features:

- ASME rated
- 150 lbs. working press
- Un-insulated
- Available for horizontal applications
- Epoxy lined



| STORAGE TANK | | | | | | | | | | | | | | | |
|--------------|--------|----------|----------------------|-------|-------|-------|-------|-------|-------|-------|-----------------|-----|-------|-----|-------|
| Nom Capacity | | Shipping | Dimensions in Inches | | | | | | | | N.P.T. Openings | | | | |
| Gal. | CU.FT. | Weight | OD | TL | HT | A | B | C | D | E | F | G | H | J | K |
| 140 | 18.72 | 350 | 24.00 | 75.00 | 81.00 | 16.88 | 10.00 | 16.63 | 28.13 | 24.00 | 2 1/2 | 3/4 | 1 1/2 | 1/2 | 1 1/4 |
| 190 | 25.4 | 460 | 30.00 | 66.00 | 72.00 | 18.75 | 8.00 | 16.25 | 17.75 | 30.00 | 2 1/2 | 3/4 | 1 1/2 | 1/2 | 1 1/4 |
| 225 | 30.08 | 510 | 30.00 | 78.00 | 84.00 | 18.75 | 10.00 | 16.25 | 27.75 | 30.00 | 2 1/2 | 3/4 | 1 1/2 | 1/2 | 1 1/4 |
| 268 | 35.83 | 810 | 36.00 | 68.00 | 74.00 | 20.94 | 6.69 | 16.38 | 16.88 | 36.00 | 3 | 3/4 | 1 1/2 | 1/2 | 1 1/4 |
| 320 | 42.78 | 890 | 36.00 | 80.00 | 86.00 | 21.06 | 8.69 | 16.25 | 26.75 | 36.00 | 3 | 3/4 | 1 1/2 | 1/2 | 1 1/4 |
| 388 | 51.87 | 900 | 36.00 | 93.00 | 99.00 | 21.19 | 9.06 | 22.25 | 33.75 | 36.00 | 3 | 3/4 | 1 1/2 | 1/2 | 1 1/4 |
| 375 | 50.13 | 980 | 42.00 | 70.75 | 76.75 | 23.38 | 6.00 | 14.00 | 18.00 | 42.00 | 3 | 3/4 | 1 1/2 | 1/2 | 1 1/4 |
| 450 | 60.16 | 1110 | 42.00 | 83.75 | 89.75 | 22.31 | 9.69 | 13.88 | 28.00 | 42.00 | 3 | 3/4 | 1 1/2 | 1/2 | 1 1/4 |
| 535 | 71.52 | 1225 | 42.00 | 96.00 | 96.00 | 22.44 | 9.69 | 13.88 | 41.38 | 42.00 | 3 | 3/4 | 1 1/2 | 1/2 | 1 1/4 |





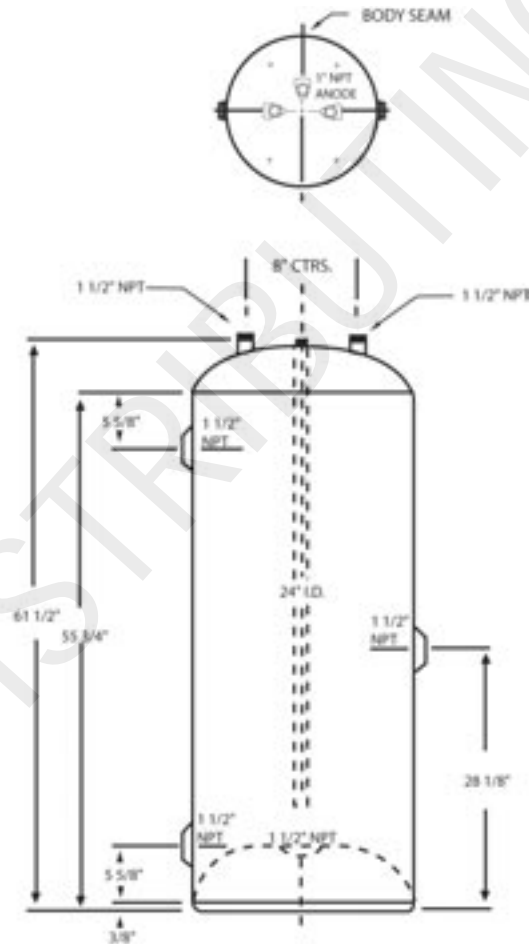
Painted Hot Water Storage Tank

MODEL T5120

Features:

- 119 U.S. Gal Cap/454 L
- 24" Diameter
- 150 PSI Working Pressure, 180° F
- Vertical or horizontal application
- Weight 245 lbs.
- Un-insulated
- Anode rod
- Price: \$1,548.00

John Wood Warranty: All John Wood glass lined bare tanks will be replaced free of charge in the case of tank leakage within one year from the date of installation.





ULTRA PLUS, GOLD PLUS and PLUS

High Efficiency Indirect Fired Water Heaters

CALL FOR PRICING



Features:

- Tank-within-a-tank design - corrugated stainless steel inner tank; steel outer tank
- Unique self cleaning design resists liming
- Special wrap around design heats faster – no cold spots
- Lowest pressure drop in the industry – no high head pump required for residential applications
- Every tank is 100% leak-tested
- Automatic air vent
- Adjustable aquastat
- Drain valve assembly (Gold Plus only)
- Up to 87% Operating Efficiency

| SPECIFICATIONS | | | | | | |
|--------------------------------------|-------------------------------|---------------------------|---------------------------|---------------------------|------------------|------------|
| | Gold Plus 30 | Ultra Plus & Gold Plus 40 | Ultra Plus & Gold Plus 60 | Ultra Plus & Gold Plus 80 | Plus 100 | Plus 102 |
| | Single Wall | | | | | |
| | First Hour Ratings (Maximums) | | | | | |
| Boiler Heating Capacity | 110 MBH | 130 MBH | 190 MBH | 350 MBH | 400 MBH | 500 MBH |
| 115° F | 230 GPH | 260 GPH | 365 GPH | 670 MBH | 740 GPH | 970 GPH |
| 140°F | 140 GPH | 170 GPH | 220 GPH | 410 GPH | 510 GPH | 650 GPH |
| Circulator | 8 GPM | 9 GPM | 13 GPM | 20 GPM | 22 GPM | 28 GPM |
| Data | 30 | 40 | 60 | 80 | 100 | 120 |
| Domestic Water | 28 gal. | 36 gal. | 46 gal. | 56 gal. | 76 gal. | 120 gal. |
| Boiler Water | 5 gal. | 6 gal. | 8 gal. | 8 gal. | 8 gal. | 30 gal. |
| Heating Surface | 13 sq. ft. | 16 sq. ft. | 20 sq. ft. | 24 sq. ft. | 28 sq. ft. | 42 sq. ft. |
| Head Loss-Boiler Side | ¾ ft. | 1 ft. | 1 ¼ ft. | 1 ½ ft. | 2 ft. | 2 ½ ft. |
| Working Pressure Inner Tank | 150 PSI (maximum) | | | | | |
| Working Pressure Outer Tank | 45 PSI (maximum) | | | | | |
| Operating Temp Domestic Water | 160° F (maximum) | | | | 190° F (maximum) | |
| Approx Shipping Weight | 135 lbs. | 155 lbs. | 180 lbs. | 200 lbs. | 370 lbs. | 450 lbs. |
| Dimensions | 30 | 40 | 60 | 80 | 100 | 120 |
| Domestic Water Inlet/Outlet | ¾ in. | | | | 1 ½ in. | |
| Boiler Water Supply/Return | 1 in. | | 1 ¼ in. | | 2 in. | |
| A Dimension | 38 in. | 45 in. | 57 in. | 66 ½ in. | 62 ½ in. | 73 ¼ in. |
| B Dimension | 9 in. | | | | 12 ¼ in. | 11 ¾ in. |
| C Dimension | 30 in. | 38 in. | 49 in. | 58 in. | 53 in. | 64 in. |
| D Dimension | 14 ¼ in. | | | | 10 ¾ in. | |
| E Dimension | NA | | | | 26 ¾ in. | 32 ¼ in. |
| F Dimension | NA | | | | 25 ¾ in. | 31 ¼ in. |





Tankless Gas Water Heaters

194,00 Btu thru 380,000 Btu Models



Residential Models

Noritz tankless gas water heaters provide endless hot water. Our residential models can handle the entire home. For heavier demand, the N-069M offers a Quick-Connect Multi-System configuration to meet any hot water demand.

Model: N-063S - 6.3 gal/min

Model: N-069M - Quick-Connect Multi-System Compatible - 6.9 gal/min

Model: N-069M-DV (Two Pipe) - Quick-Connect Multi-System Compatible - 6.9 gal/min



Residential/Commercial & Direct Vent Models

N-084M, N-084M-DV & N-132M

To meet the heavier demands in residential applications, the N-084M, N-084M-DV, & N-132M offer high capacities and are best suited for these applications. All three units have coated copper heat exchangers to prevent corrosion and deterioration and the internal piping is 25% thicker than residential models to combat failures while extending the life of products. In addition, all 3 models are Quick-Connect or Multi-System (with a System Controller) capable for heavier hot water applications.

N-084M - Quick Connect & Multi-System Compatible - 8.4 gal/min

N-084M-DV (Two Pipe) - Quick Connect & Multi-System Compatible - 8.4 gal/min

Commercial Model

N-132M - The N-132M is the highest capacity tankless water heater in the world – 13.2 gal/min Quick Connect & Multi-System Compatible

| Model | Price |
|-----------|------------|
| N-063S | \$1,402.00 |
| N-069M | \$1,792.00 |
| N-069M-DV | \$1,870.00 |
| N-084M | \$3,118.00 |
| N-084M-DV | \$3,352.00 |
| N-132M | \$6,238.00 |



Tankless Gas Water Heaters

194,00 Btu thru 380,000 Btu Models

| NORITZ TANKLESS GAS WATER HEATERS | | | | | | | |
|-----------------------------------|-----------------------------|---|--|--|--|--|--|
| | | N-063S | N-069M | N-069M-DV | N-084M | N-084M-DV | N-132M |
| Gas Consumption | NG LP | Max. 194,000 Btu/h & Min 25,000 Btu/h | | | Max. 236,000 & Min. 21,000 Btu/h | | Max. 380,000 Btu/h & Min. 21,000 Btu/h |
| Capacity Range | | 0.75 - 6.3 Gal/Min | 0.75 - 7.9 Gal/Min | | 0.75 - 8.4 Gal/Min | | 0.75 - 13.2 Gal/Min |
| Type | Installation | Indoor or Outdoor Wall Hung | | Indoor, Wall Hung | Indoor or Outdoor Wall Hung | Indoor, Wall Hung | Indoor or Outdoor, Wall Hung |
| | Air-supply / Exhaust | Power Vented, 4" Flue | | Direct Vent (Sealed Combustion), 4" (intake and exhaust) | Power Vented, 4" Flue | Direct Vent (Sealed Combustion), 4" (intake and exhaust) | Power Vented, 5" Flue |
| Ignition | | Direct Ignition | | | | | |
| Operating Water Pressure | | 15-150 PSI | | | | | |
| Minimum Flow Rate | | 0.75 GPM | | | | | |
| Gas Supply Pressure | | NG: 4.0" - 10.5" LP: 8.0" - 14.0" | | | NG: 5.0" - 10.5" LP: 10.5" - 14.0" | | NG: 5.0" - 10.5" LP: 10.5" - 14.0" |
| Dimensions | | 23.6" H x 13.8" W x 9.4" D | | 24.2" H x 18.3" W x 9.4" D | | 29.5" H x 18.9" W x 11.8" D | |
| Weight | | 44 pounds | 46 pounds | 63 pounds | | 105 pounds | |
| Water Holding Capacity | | 0.2 Gallon | | 0.3 Gallon | | 0.6 Gallon | |
| Connection Sizes | Water Inlet | 3/4" | | | | 1" | |
| | Hot Water Outlet | 3/4" | | | | 1" | |
| | Gas Inlet" | 3/4" | | | | | |
| Power | Supply | 120VAC(60Hz) | | | | | |
| | Consumption | NG: 71W LP: 71W Freeze Prevention 125W | | NG: 86W LP: 92W Freeze Prevention 135W | NG: 80W LP: 93W Freeze Prevention 135W | | NG: 137W LP: 142W Freeze Prevention 371W |
| Temperature Settings | No Controller | 120°, 130°, 140°F (Original is 120° F) | 100°-150° F (in 5° F intervals), 160°, 170°, 176° F (14 options) | | 100°-150° F (in 5° F intervals), 160°, 170°, 180° F (14 options) | | 100°-150° F (in 5° F intervals), 160°, 170°, 180° F (14 options) |
| | W/Controller | 100°-150°F (In 5° intervals), 160° F (12 options) | 120°, 130°, 140°, 176° F (original is 120° F) | | 120°, 130°, 140°, 180° F (original is 120° F) | | 120°, 130°, 140°, 180° F (original is 120° F) |
| Accessories | | Anchoring Screws | Remote Controller, Remote Controller Cord, Anchoring Screws | | | Remote Controller, Remote Controller Cord, Exhaust Adapter, Anchoring Screws | |

Note: Stainless Steel (Category III) Venting

