

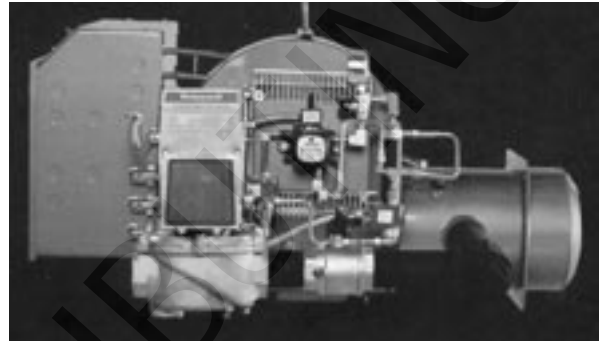


MODEL CR

CALL FOR PRICING

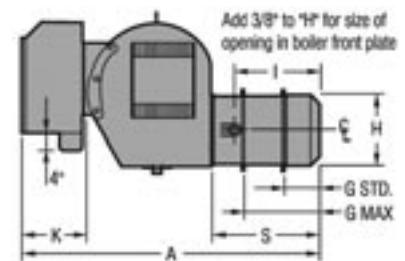
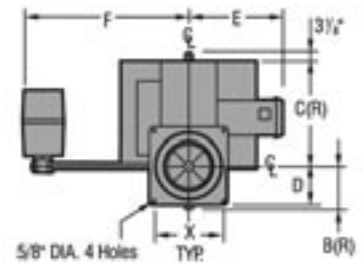
Features:

- 3450 RPM Motor, squirrel cage blower, panel with 2 lights (power and main fuel) and control switch
- Gas electric pilot and gas ignition transformer
- Leakage test cock, pilot cock and main gas cock
- Pilot and main gas pressure regulators
- Air safety switch
- Flame safeguard with UV scanner
- On-off diaphragm gas valve with fixed air control manual adjustment
- Low-high-off motorized gas valve with automatic air control
- Low-high-low motorized gas valve with automatic air control
- Modulation with automatic air control
- Dual gas safety valves
- High and low gas pressure switches
- NOVA Low NOx systems
- Customized control systems and accessories



BURNERS

GAS



CR DIMENSIONS											
Model Number	A	B	C	D	E	F	Std G	Max G	H	S	X
CR1-G-12	34.12	5.62	14.50	4.62	12.25	20.00	3.25	4.75	7.25	12.38	7.25
CR2-G-15	34.12	6.12	14.00	5.25	14.00	20.00	4.00	6.75	8.75	13.38	8.50
CR2-G-20A	39.12	6.12	14.00	5.25	14.00	20.00	4.00	6.75	8.75	13.38	8.50
CR2-G-20B	39.12	6.12	14.00	5.25	14.00	20.00	4.00	6.75	8.75	13.38	8.50
CR3-G-20	44.00	7.00	15.25	6.00	16.00	22.38	4.50	8.00	10.12	15.50	10.00
CR3-G-25	44.00	7.00	15.25	6.00	16.00	22.38	4.50	8.00	10.12	15.50	10.00
CR3-G-25B	44.00	7.00	15.25	6.00	16.00	22.38	4.50	8.00	10.12	15.50	10.00

CR RATINGS					
Model Number	Max MBH	Nominal Boiler H.P.	Motor H.P. 3450 RPM	Gas Train Size	Min Gas Press (in. W.C.)
CR1-G-12	1491	35	1/2 hp	1 1/4	5.0
CR2-G-15	2050	48.5	1/2 hp	1 1/2	5.0
CR2-G-20A	2396	57	3/4 hp	2	5.0
CR2-G-20B	3100	73	1 hp	2	5.0
CR3-G-20	3753	89	1 1/2 hp	2	5.0
CR3-G-25	4500	106	1 1/2 hp	2 1/2	5.0
CR3-G-25B	4753	113	3 hp	2 1/2	5.0





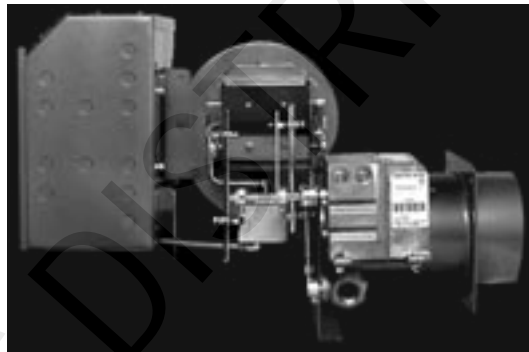
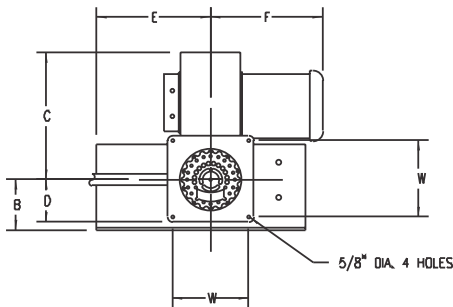
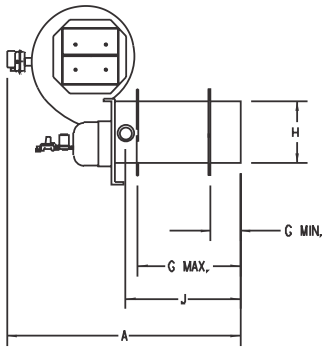
TYPE JR

Forced Draft Burners

CALL FOR PRICING

Features:

- 3450 RPM motor and squirrel cage blower
- Leakage test, pilot and main gas cocks
- Gas electric pilot and gas ignition transformer
- Pilot and main gas pressure regulators (14" W.C. inlet max)
- Flame safeguard with flame rod, intermittent pilot and prepurge (for natural gas only)
- Air safety switch
- One (1) combination diaphragm valve with pressure regulator and one (1) auxiliary valve



GAS BURNERS

JR DIMENSIONS											
Model Number	A	B	C	D	E	F	G (Std)	G (Max)	H	J	W
JR15A-10	24.25	5	12.5	4.62	11.25	10.25	3	10.5	6.12	11.5	7.25
JR30A-10	24.25	5	12.5	4.62	11.25	11.75	3	10.5	6.12	11.5	7.25
JR30A-12	24.25	5	12.5	4.62	11.25	11.75	3	10.5	6.12	11.5	7.25
JR50A-15	27.75	5.62	14	5.25	11.25	11.75	3.75	12.25	8.12	13.62	8.25
JR50A-20	27.75	5.62	14	5.25	11.25	11.75	3.75	12.25	8.12	13.62	8.25

JR RATINGS					
Model Number	Max MBH	Nominal Boiler HP	Motor HP 3450 RPM	Gas Train Size (Inch)	Min Gas Pressure (inches W.C.)
JR15A-10	700	16.7	1/4 hp	1	5.0
JR30A-10	1075	25.6	1/3 hp	1	5.0
JR30A-12	1260	30.0	1/3 hp	1.25	5.0
JR50A-15	1703	52.3	1/2 hp	1.50	5.0
JR50A-20	2049	52.3	1/2 hp	2	5.0

ECONOMITE
Burners

CALL FOR PRICING

Features:

- Combustion air blower with 120 volt, 60 Hz motor
- Blower safety switch
- Automatic gas valve
- Manual gas shut-off valve
- Adjustable gas pressure regulator
- Adjustable floor legs (omitted on RE4000 series and EC series)
- 4" diameter tube
- All models are equipped with 100% safety shut-off controls
- E20B(P), 400B-02, 400B-02P – constant pilot with manual ignition, thermo-electric safety
- RE32, 400-33, 400B-33, F400-33, F400B-33, RE4400B, RE4700BA, RE4850BA, RE4400 and RE4850A – intermittent pilot with automatic spark ignition, electronic safety
- EC200, EC300, RE4400DS, DS24A DS45B – direct spark ignition of main flame, electronic safety

BURNERS

GAS

POWER GAS CONVERSION BURNER				
Model Number	Burner Input MBH		Minimum Gas Pressure inches W.C.	14" W.C. Burner Tube Length
	Minimum	Maximum		
EC 200	70	200	6"	7.5"
EC 300	90	300	6"	7.5"
RE4400DS	132	400	7"	9"
RE4400B	132	400	7"	9"
RE4700BA	230	700	7"	9"
RE4850BA	280	850	7"	9"
RE4400	132	400	5"	9"
RE4850A	280	850	7"	9"
E20B	50	225	5"	8"
DS24A	50	225	5"	8"
RE32	50	300	4"	Adjustable 2.5" - 6.25"
400B-02	200	400	5"	9"
DS45B	200	400	5"	9"
400-33	185	400	5"	9"
400B-33	185	400	5"	9"
F400-33	300	700	5"	9"
F400B-33	300	700	5"	9"

Electrical supply 120V/60Hz standard as shown - 230 volt 50/60Hz available - contact factory
 Approval agency acceptance: all burners design certified by C.S.A. or ANSI Z21.17
 U.L. listed

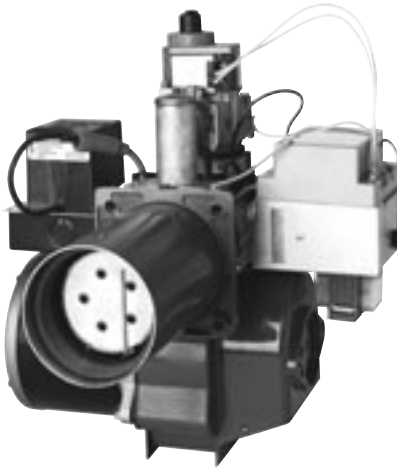




MODEL HSG 200/400

Gas Burner

CALL FOR
PRICING



Features:

- HSG 200 – 60M Btu to 200M Btu
- HSG 400 – 200M Btu to 400M Btu

Capacities:

Firing rates from 60M through 400M Btu

Fuel:

Natural or LP Gas 2" to 4" water column – adjustable

Controls:

24-volt combination control $\frac{3}{4}$ " IPS, with redundant valve
Flamerod sensor 4 second safety shutdown

Ignition:

Direct spark ignition 7300-volt ignition transformer
Remove top cover for easy access to ignition components

Motor:

3450 RPM – 115V – 2.4A

Fan Housing:

Aluminum alloy, die cast housing
Maintains alignment of all moving parts throughout the lifetime of the burner

Mounting:

Adjustable flange (pedestal mount available)

Air Tube:

4" OD available in standard lengths of 6", 9" and 12"

Combustion Head:

Stainless Steel, precision stamping. No change for entire firing range

ORDERING INFORMATION

Model Number	Tube Length	Capacity - M Btu
HSG 200	6", 9", 12"	60-200
HSG 400	6", 9", 12"	200-400



MODEL EH, HS and FH Oil Burners

Features:

Flamelock assures positive stability, resulting in a clean, uniform high temperature flame. High static pressure for better air/oil mixture. Clean, smooth ignition and sharp, positive, no-drip shut-off prevents carbon soot from forming. Nozzle operating temperatures remain low. Economy results from high carbon dioxide readings, providing a high combustion efficiency that saves fuel.

- Model HS – 0.50 – 3.00 GPH
- Model EH – 3.00 – 6.00 GPH
- Model FH – 4.00 – 13.00 GPH
- 3450 RPM pump and motor assembly
- 10,000 V ignition transformer
- Adjustable mounting flange



HA
Inshot Burners



Features:

- Rugged cast iron adjustable venturi – places the flame in optimum location for oil furnaces
- Readily removable pilot, flame spreader and pilot lighter
- Durable pre-drilled steel mounting flange – for easy mounting
- Adjustable orifice included

CALL FOR PRICING

ADAMS GAS BURNERS				
Model Number	BTU/Hr. Input		Gas Pipe Connection	Approx Shipping Weight
	Maximum	Minimum		
HA-300	290,000	50,000	3/4"	16 lbs
HP-225	225,000	50,000	3/4"	26 lbs
HP-400BPS	400,000	100,000	3/4"	31 lbs

HP
Spacesaver Power Burner



Features:

- Compact design saves space
- Adjustable orifice
- Fits the smallest enclosures
- Easily accessible air and firing rate adjustment
- Completely factory wired with motor, transformer and terminal block mounting on slide out chassis
- Slide out gas valve and manifold
- Rugged steel mounting flange, 5" or 8" extension sleeve optional
- HP225 – Standing pilot
- HP400BPS – Spark ignition

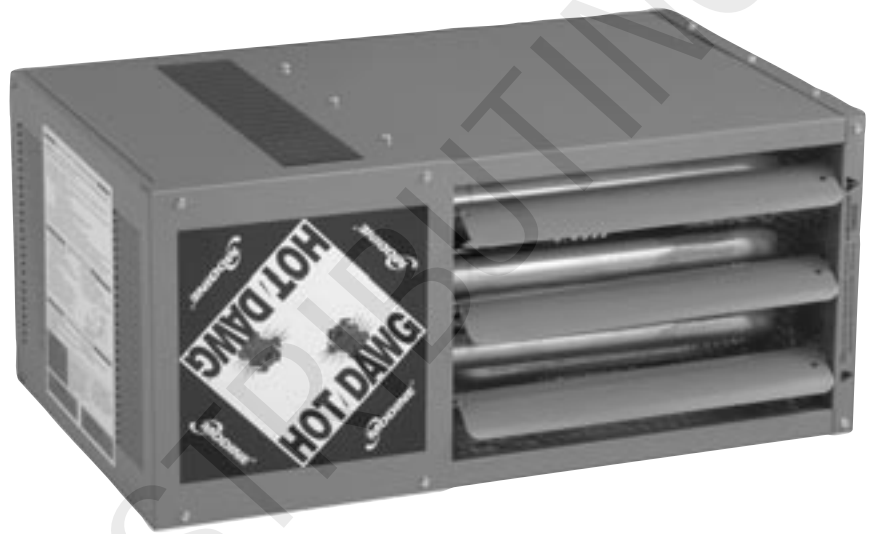


MODEL HD - HOT DAWG

Gas Fired, Power-Exhausted, Low Profile Unit Heater
30,000 Btu thru 75,000 Btu Models

Features:

- 80% thermal efficiency
- Horizontal or vertical venting
- Field convertible to propane
- Low profile casing
- Hot surface ignition
- Mounting brackets supplied
- Commercial or residential applications
- Quiet operation
- Standard power exhauster simplifies side-wall or roof venting with small diameter vent-pipe
- Light weight, allows suspension from ceiling with only 2 angle brackets (included)
- Heat exchanger made from corrosion-resistant aluminized steel
- Full 10 year warranty on heat exchanger



UNIT HEATERS

MODEL HD PERFORMANCE DATA				
	Model Number			
	HD 30	HD 45	HD 60	HD 75
Btu/Hr Input	30,000	45,000	60,000	75,000
Btu/Hr Output	24,000	36,000	48,000	60,000
Vent Dia. (in.)*	3 or 5	3 or 5	3 or 5	3 or 5
CFM @ 70° F	505	720	990	1160
Air Temp. Rise (° F)	44	46	45	48
Maximum Mounting Height (ft.)	10	10	12	14
Heat Throw (ft.)	25	27	36	38
Motor HP	¹ / ₂₅	¹ / ₁₅	¹ / ₁₂	¹ / ₁₂
Price	\$1,004.00	\$1,060.00	\$1,110.00	\$1,156.00

* Vent size varies depending upon application
NOTE: Do not locate any gas-fired unit in areas with chlorinated, halogenated or acidic vapors in atmosphere.

